



INTRODUCTION

Since its establishment in 2003, Tech Group has grown into a vertically integrated multi-discipline construction and industrial company with a leading position in its markets. The Group has businesses in various contracting disciplines such as piling and foundations, contracting, ready-mix concrete, electro mechanical works, steel fabrication, aluminium and glass, interior and joinery works, concrete blocks and premium quality petroleum, bitumen and bituminous products.

Tech Wood, a wood joinery and interior design works division specializes in producing dynamic turnkey fit-out solutions, manufacturing and installation of fire-rated doors, panelling, hotel interiors, wardrobes, interior designing, kitchen cabinets, joinery works, vanity and doors for commercial and residential and special projects.

At the heart of our operation is a large, modern and fully equipped state of the art joinery factory set up on an area of 500,000 sq ft that enables us to produce tailor-made solutions for large or small projects. From design to planning and completion, Tech Wood offers a complete turnkey solution, with full project management. From concept to execution, we work within strictly controlled time and budgetary parameters. Our reputation for quality work brings us repeat orders, and these are the best testimonials of Tech Wood's ability to consistently deliver impressive results.

Tech Wood is an ISO 9001:2015, 14001:2015 and OHSAS 18001:2007, BM Trada and an IFC certified company that adheres to the highest quality, health, safety and environment standards.





COMPREHENSIVE SERVICE FROM START TO FINISH

Tech Wood offers operational and strategic support at all stages of a project. These include:

- Full project and contract management, ensuring clear coordination between in-house teams - design, manufacture, procurement and site – including a comprehensive set of approved nominated subcontractors and suppliers.
- Full technical and design support from our in-house design team.

TECH WOOD SERVICES

- Joinery manufacture and installation
- Upholstery and soft furnishing
- False ceilings and partitioning
- Architectural steel works
- Ceramic tiling
- Architectural and decorative glass works
- Commercial kitchen installations
- Furniture manufacture
- Gypsum works
- Marble Installation
- MEP
- Interior Design

KEY MARKET AREAS

High end interiors fit-out including:

- Retail and leisure
- Hospitality projects
- Commercial offices and space planning
- High end residential apartments and villas
- Royal residences

DEDICATED AFTER SALES SERVICE

Once a job is complete, we do not consider our work finished. As a responsible and dedicated partner, we provide a complimentary after sales service. That includes supplying and installing spare parts when required, and ensuring all is well with your fit-out. Also resolving issues quickly with no disruption to your work flow.



IN-HOUSE DESIGN

With Our In House Design Department we are able to offer a truly full turnkey solution for your project. Whether you have an idea that you are unsure how to translate into a design or a design in place that requires taking to technical production drawing. Our Highly Experienced Interior Designers and Design Coordinators will be able to bring your design to life.





MANUFACTURING WITH HIGHLY SKILLED PEOPLE

We operate a fully equipped carpentry and joinery factory, staffed with highly trained and skilled craftsmen. This enables us to offer bespoke, high-spec in-house solutions for all wood work and joinery requirements, allowing for the production of the finest and most intricate of interiors when required.

COMMITMENT TO QUALITY

Tech Wood's commitment to quality can be seen in the professionalism and skills of our all workers. Attention to detail is paramount and our quality control procedures ensures that projects are always completed to the highest standards of our clients expectancy.

From the start, our credo has been to recruit good people, instil our philosophy, inspire, motivate and reward. We have always strived to find people who would not only understand our goals, but also share and live our vision.



IN-HOUSE FACTORY'S EQUIPMENT

- Edge Bender Machine
- Double Edge Bender Machine
- Cold and Hot Press Machine
- Lock and Hinge Making Machine
- Spindle Molder
- F9 45* Frame Cutter Machine
- Auto Milling F9 TS Machine
- Surface Planer
- Cefla Machine Finishing
- UV Machine For Painting
- Beam Panel Saw Machine Homag
- CNC Router Machine
- Kiln Dry Room
- Blower For dust Collecting



OUR SERVICES



OUR SERVICES











scm group



stefani

TECH WOOD



SAFETY POLICIES

Certified by ISO and OHSAS, Tech Wood ensures special care for health, safety and environment (HSE) of its employees and the surroundings, and follows the key components as below:

- Planning
- Implementing and operation
- Checking and remedial action
- Management analysis and review
- Occupational health and safety policy

Health:

Tech Wood ensures proper working environment where health of each employee and visitor is fully protected. All the measures are taken as per the OHSAS standards including daily cleaning of factory premises, offices, stores, production area, open areas and labor accommodation, and providing proper medical aid as and when required.

Safety:

Tech Wood ensures hazard/ accident-free environment for all its employees and visitors by strictly following the OHSAS standards especially at the production area, store, accommodation, vehicle movement, maintenance and site management. All the workers are properly protected from occupational hazards as Tech Wood is well-equipped with safe machinery and tools.

Environment:

Tech Wood ensures protection of environment by properly disposing the waste from its operations on a daily basis, by cleaning premises, and by using ISO-certified and eco-friendly raw material.

QUALITY POLICY

Tech Wood provides reliable and efficient services to its wide-ranging clients, maintaining the highest level of quality, thus achieving total client satisfaction by implementing a fully-integrated and documented QMS as per ISO 9001:2008, making every employee fully accountable.

Quality Management System Plan

- All the activities affecting QoS are carried out under strict and controlled conditions.
- Close and continuous monitoring and analysis of quality indicators providing feedback to enable quality improvement, while giving due regard to the human factor.
- Providing updated instructions and trainings, and creating awareness among the entire staff.
- QMS is communicated, understood and implemented at all levels throughout the organization.

Products & Services

Tech Wood applies its QMS at various stages including selection of suppliers, procurement of raw material, grading of raw material before accepting at the store level, monitoring the quality standards at each level of production, packing, transportation, delivery, storing on-site, installation on-site and protection of items after installation until handed over to the client. This is strictly implemented as per the ISO 9001:2008 QMS standards. Tech Wood offers high quality of both pre and post sales services – from enquiry to signing of contract and till the completion of the works and further as and when required by the clients/ customers.

Quality Policy

Certified for QMS ISO 9001:2000, Tech Wood has deployed a complete fool-proof quality assurance and control system.

MAJOR CLIENTS



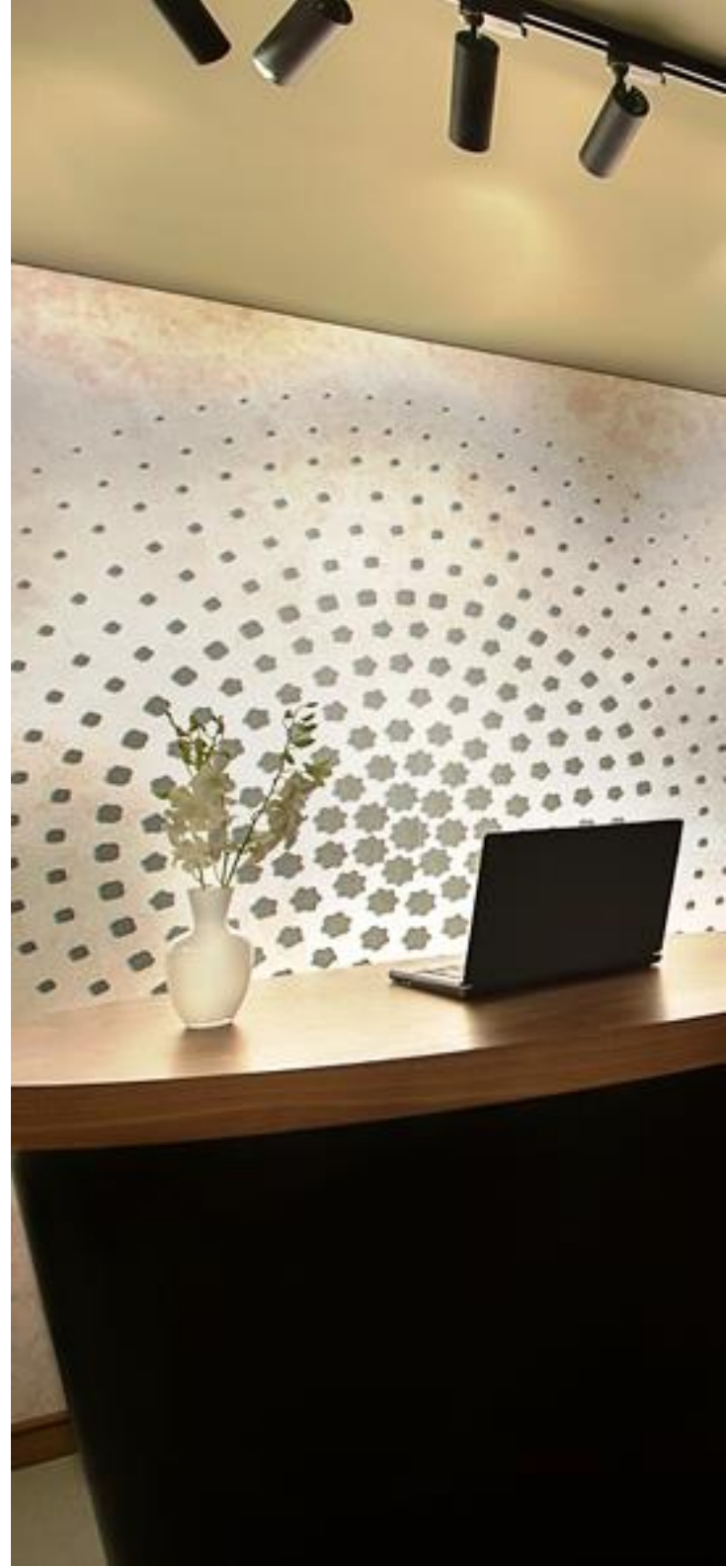
MAJOR PROJECTS

Project Name: The Fairmont Palm Hotel & Residence, Dubai
Client: Fairmont Resort Group
Consultant: DSA Architect
Contract: AED 19.8 M

Project Name: Ramada Hotel & Suites, Ajman
Client: R- Holding
Consultant: Canadian Consultant/Proarch Arch
Contract: AED 15 M

Project Name: Wyndham Garden, Corniche Ajman
Client: R- Holding
Consultant: BU Humaid
Contract: AED 10 M

Project Name: Ibis Hotel at Al Mina Road, Jumeirah Dubai
Client: R- Holding
Consultant: Engineer Adnan Saffarini
Contract: AED 15 M



MAJOR PROJECTS

Project Name: Crowne Plaza, Dubai Marina
Client: PP Group
Consultant: NEB
Contract: AED 10 M

Project Name: W Resort Hotel & Resident
Client:
Consultant: Palm Jumeirah
Contract:

Project Name: 29 Luxury Villas, Al Zorah Golf Club Ajman
Client: Al Zorah Development
Consultant: NAGA
Contract: 12 Million

Project Name: Food Court, City Life Mall – Al Tallah Ajman
Client: R Select
Consultant: Continental Engineering
Contract: 4.5 M



MAJOR PROJECTS



HOTEL GUEST ROOMS









PUBLIC AREAS

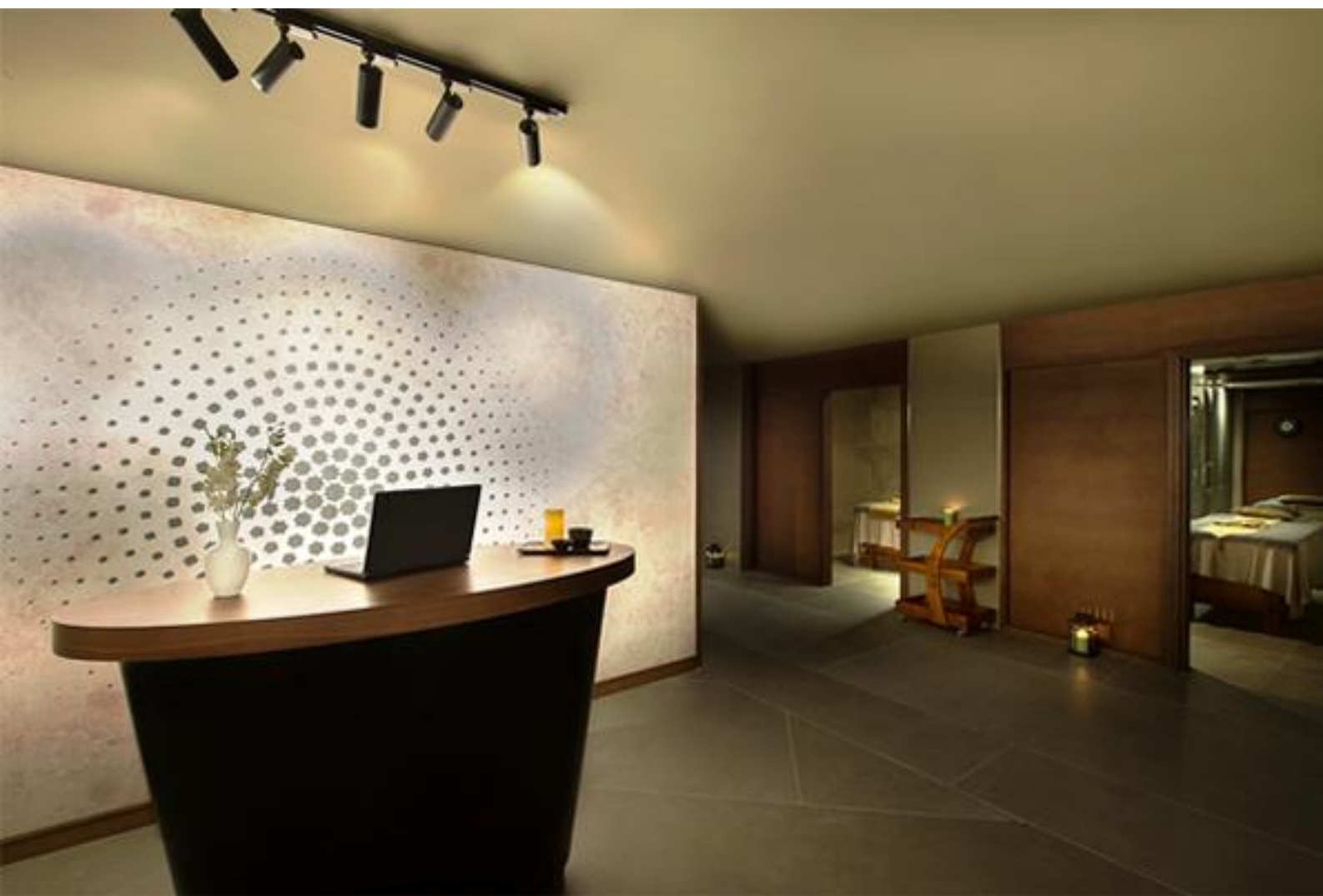




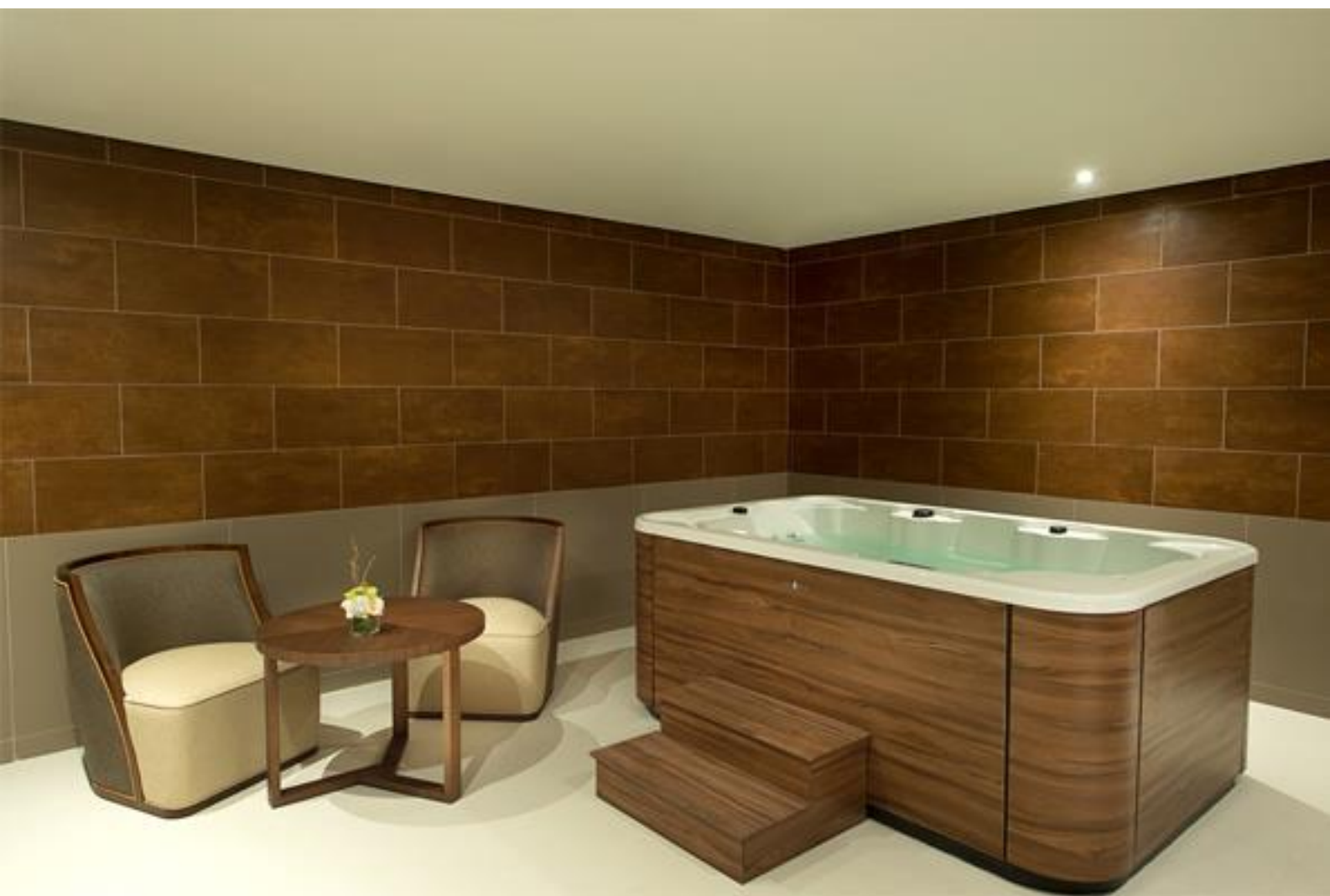
MEETING ROOMS



EXECUTIVE LOUNGES



SPA





LEISURE



RESTAURANTS









TECH WOOD

A TECH GROUP COMPANY

P.O. Box 4048, Al Jurf Industrial Area
Ajman, UAE

Telephone: +971 06 749 0034

Email: wood@techgroup.ae

Web: www.techgroup.ae